



Conservation Starts At Home



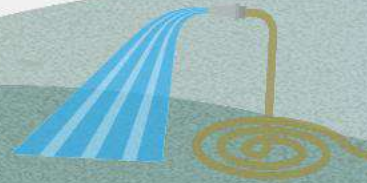
Karen Ibasco WWF-PHILIPPINES ADVOCATE



Conserving Water, Conserving Forests

11:00 AM

Paolo Pagaduan WWF-PHILIPPINES PROJECT MANAGER
FORESTS FOR WATER





Maging malinis sa katawan sa lahat ng oras
Palaging maghugas ng mga kamay
at regular na maligo





Water

Does not come from the faucet

Water Cycle



#Journey of water

San Miguel

San Idefonso

Doña Remedios Trinidad

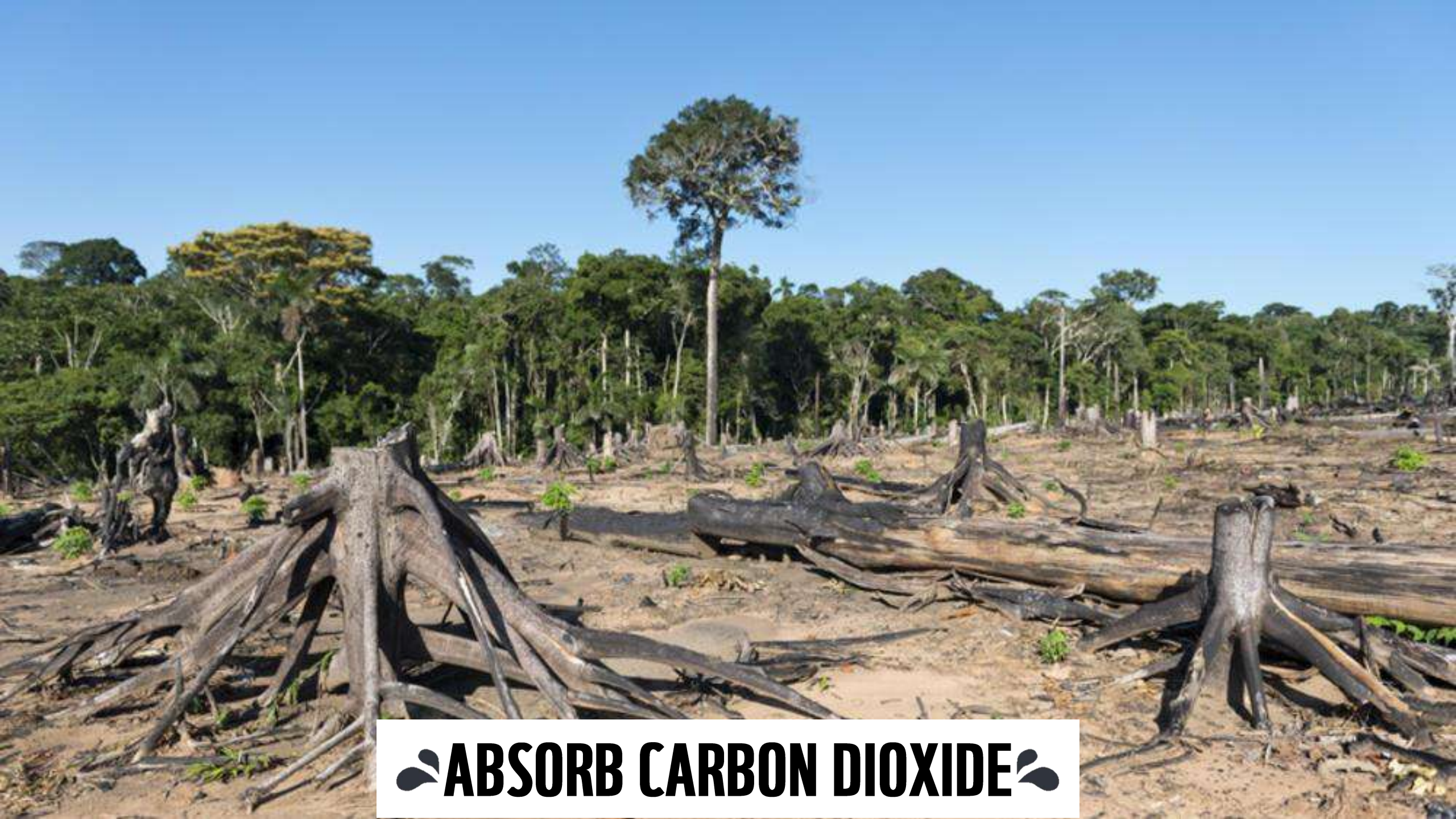
Bulacan

Baliuag

Angat

Pandi

Norzagaray



🌿 ABSORB CARBON DIOXIDE 🌿



🌿 PROVIDE HABITAT FOR LIFE ON EARTH 🌿

Forests: our antiv**irus**



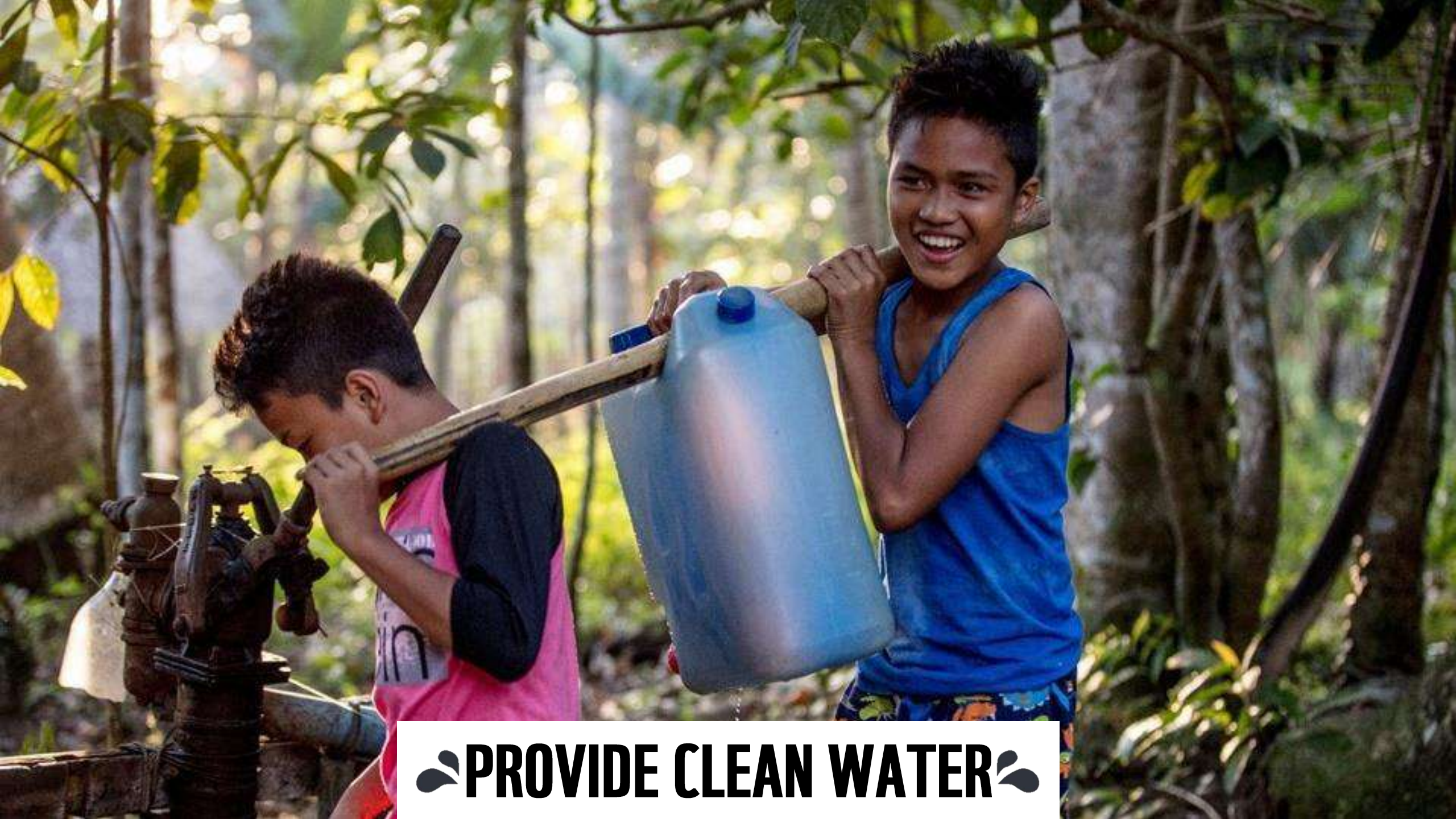
Intact forest

VIRUSES ARE IN BALANCE
WITH THE ENVIRONMENT
AND THE DIFFERENT SPECIES



Degraded forest

VIRUSES MEET
NEW SPECIES AND SPREAD
GENERATING EPIDEMICS



 **PROVIDE CLEAN WATER** 



🌿 PROVIDE ENOUGH WATER 🌿



 **PREVENT FLOODING** 

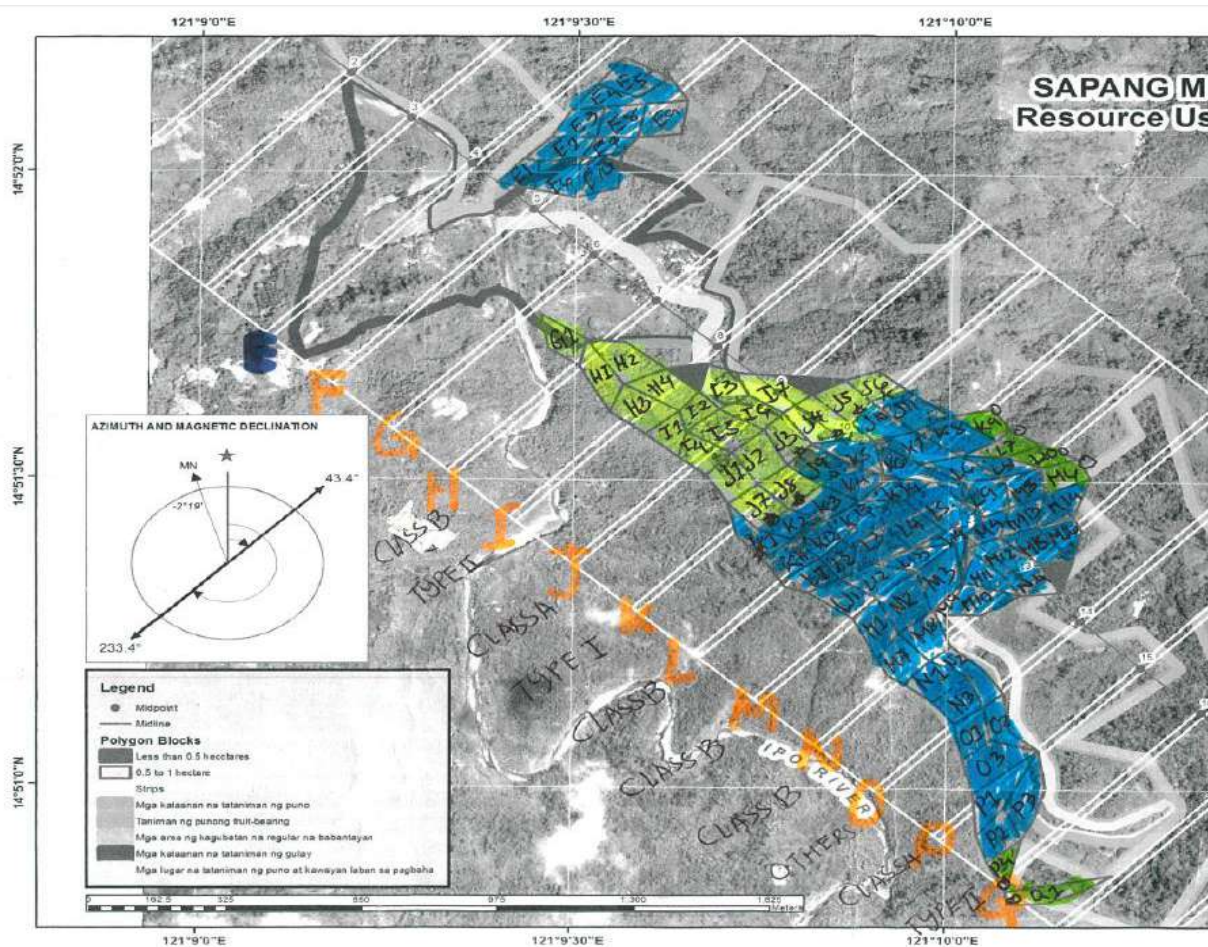


Forests
for

Water

Forests for Water

- Research



- Reforestation



🌿 Forests for Water 🌿

- Management



- Education





🌊 Surface Water 🌊



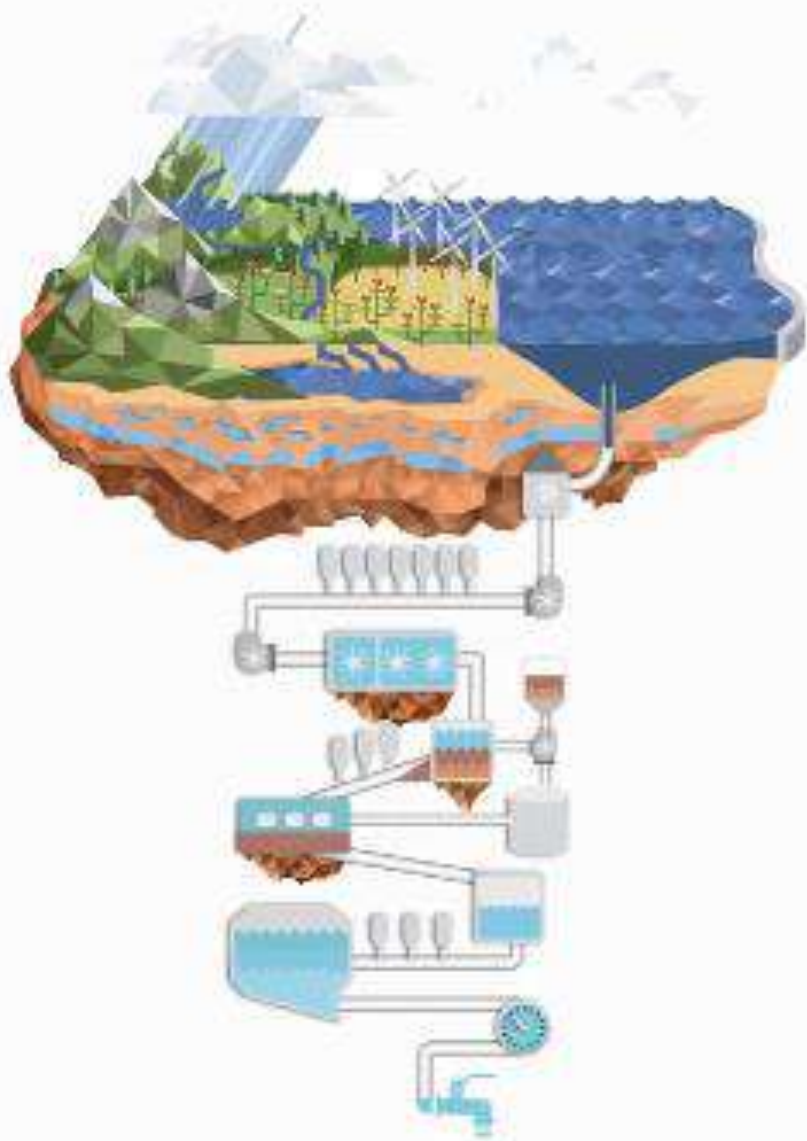
Groundwater



Capture

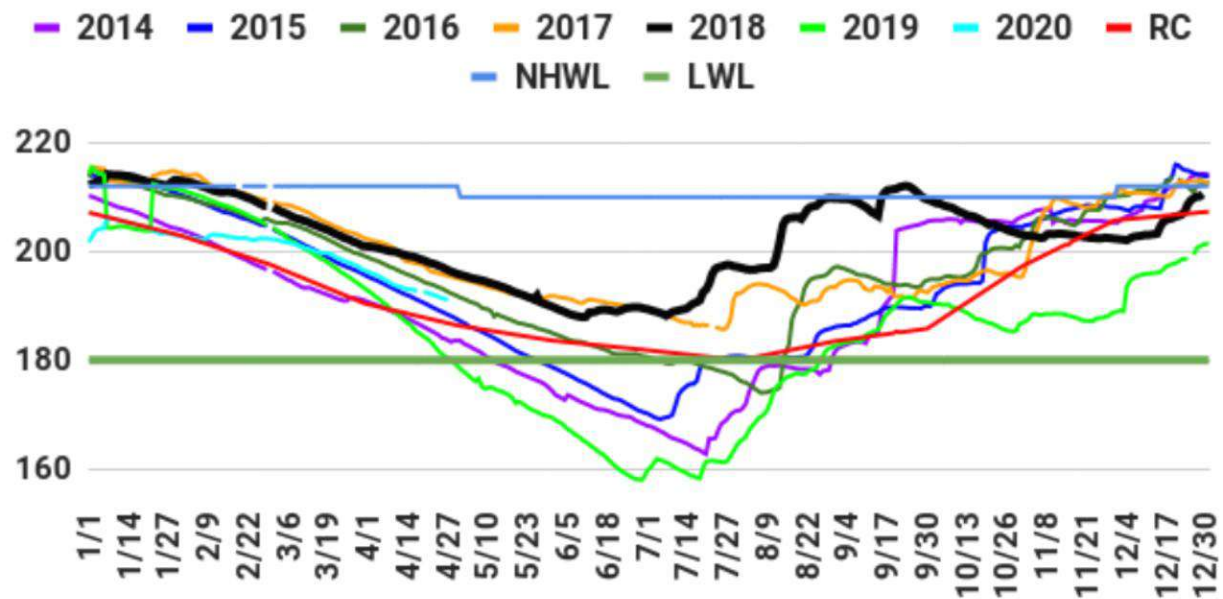
Clean

Convey

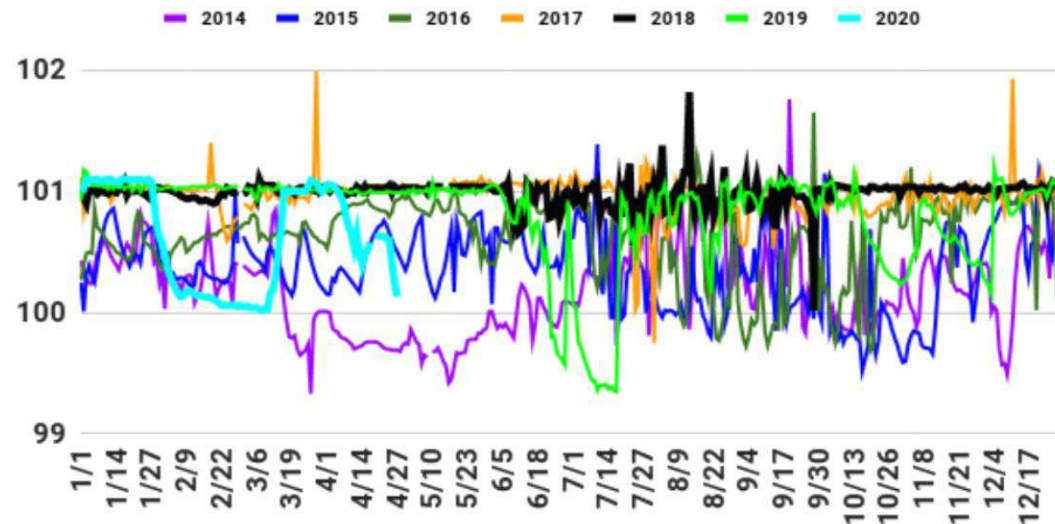


Water Supply

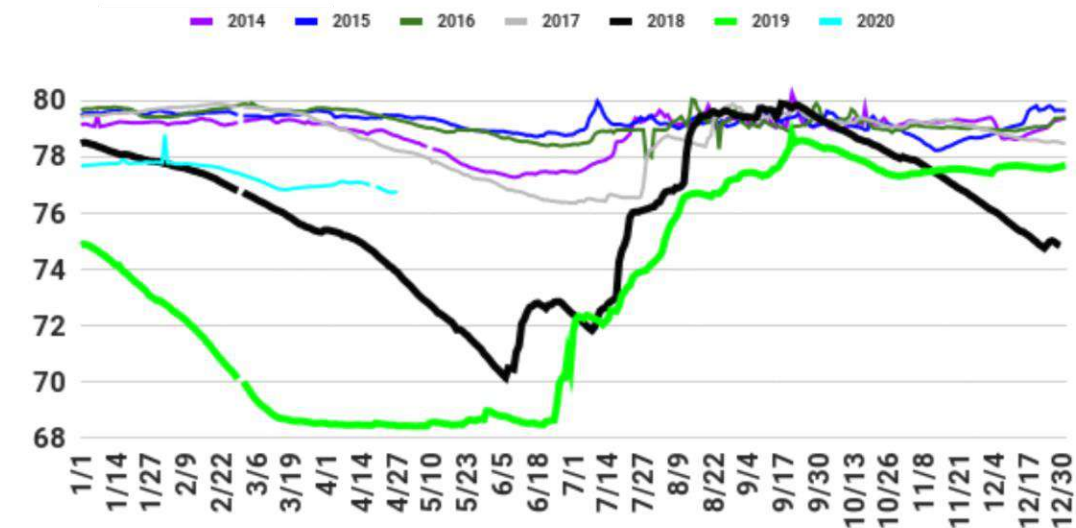
ANGAT



IPO



LA MESA





Angat 2019



Angat 2020



Water Use



A large black pipe on the left side of the frame discharges a powerful stream of water into a lush green rice paddy field. The water splashes and flows down a narrow channel between rows of rice plants. In the background, there are palm trees, a clear blue sky, and a distant hillside. The overall scene is bright and sunny.

BETTER water practices for Agriculture

~80% of water is used in agriculture



Commercial/Industrial

~ 30% of water in Metro Manila is used by Commercial/Industrial establishments



🌿 Domestic/Household 🌿



Used-water Treatment

Manila Water Marikina North STP

 Return to Nature 





Supply

Demand



300 liters



Water Volume



200mL



1,000mL (1Liter)



20L (20,000mL)



1,000L (1m³ or cu m.)



30,000L (30m³)

Water Volume

2,500,000L (2,500m³)

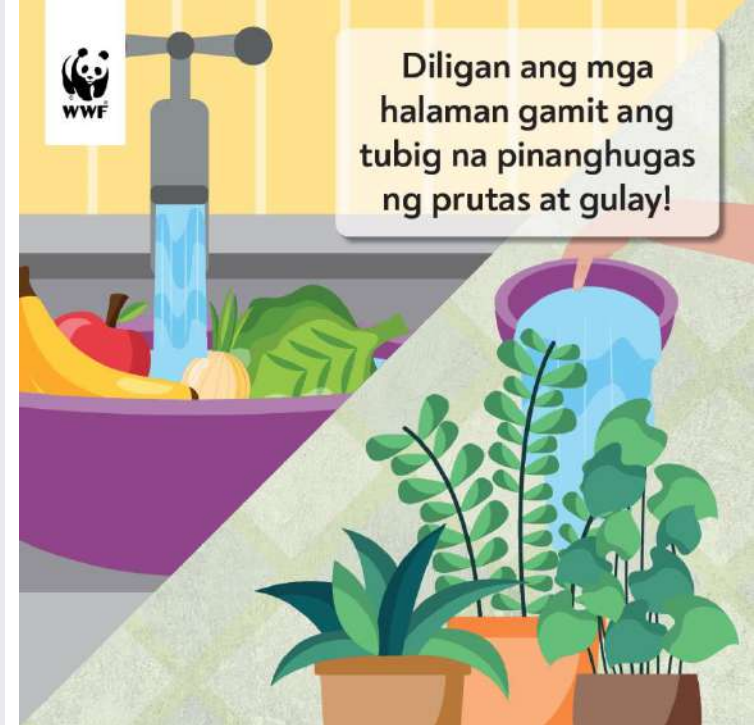


Water Demand Management

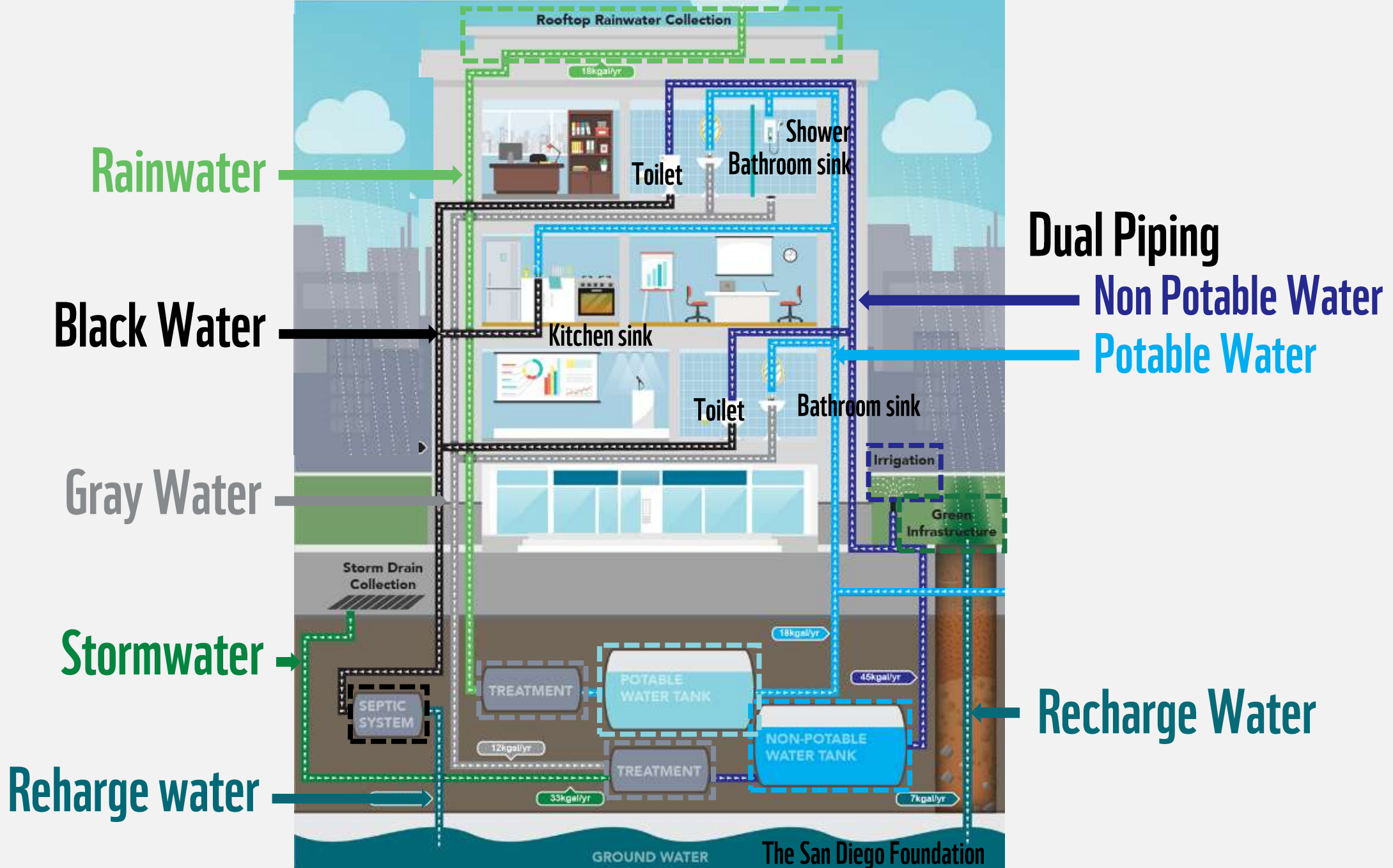
- Water loss reduction
- Pressure management
- Water re-use
-
- Water efficient fixtures
- Pricing policies
- Water conservation
-

(07-1617A-2nd Obs.)(5-17-40-10A)(12-3001)
IPO DAM, MANILA WATER DEPT., ANGAT RIVER, BULACAN, P.I.

Household



Scenario 1: The Ideal Net Zero Water Building





EASY TO CLEAN

1-piece elegant look traditional toilet, fully glazed concealed trapway



SOFT CLOSE SEAT

Prevent the seat from slamming by closing softly



WATER-EFFICIENT PRODUCT

Low consumption, 1.28 gpf/4.8 Lpf



SIPHONIC ACTION FLUSH

Increase the pressure of the flush



MaP RATING

Ensure high-efficiency with 800 MaP rating



TRANSOLID® VITREOUS CHINA

Enamel coated high quality porcelain, sleek look



5 YEAR WARRANTY

Limited 5-Year Warranty



UPC CERTIFIED

Ensure public's health

The more stars the more water efficient

WATER RATING

A joint government and industry program
Sirrocco Sahara clothes washer Model SS120
Load capacity 8 kg

Water Consumption

70

Litres per wash
using Normal program

When tested in accordance with Standard AS/NZS 6400
For more information and to compare appliances, refer to:
www.waterrating.gov.au

SAVE THE
HUMANS





©

®

