



Conservation Starts At Home

Marc Nelson

WWF-PHILIPPINES NATIONAL AMBASSADOR



Monci Hinay

WWF-PHILIPPINES PROJECT MANAGER
FOR SUSTAINABLE FOOD SYSTEMS



Rovilson Fernandez

WWF-PHILIPPINES NATIONAL AMBASSADOR



Basics of Urban Container Gardening

05:00 PM



Conservation Starts At Home

Please support the lives of
those who support ours.

 **GCash**
SCAN TO DONATE

WWF Philippines A



Together, we can help our fellow
Filipinos rise above this crisis.



URBAN CONTAINER GARDENING



It is the creation of microfarms in limited spaces primarily in urban households where crops (vegetables, herbs, etc.) are grown in containers rather than into the ground.

It aims to address **food security** while closing the loop between home food production and household **waste management**





limited spaces
need wider
mindsets



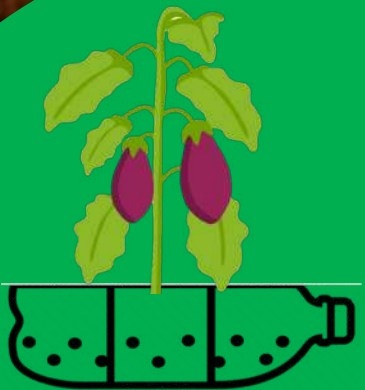
JOJO ROM, DAVAO CITY



6

BASIC THINGS TO FOLLOW

IN URBAN CONTAINER GARDENING





**start small.
grow only what
you need.**





SELECT A GARDEN SITE

KEY LOCATION CONSIDERATION

1

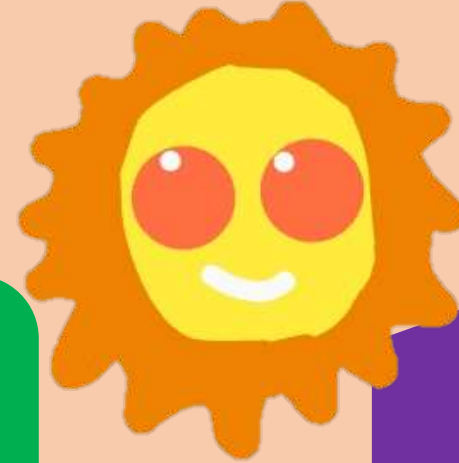
**ACCESS TO
ENOUGH
SOIL AND
NUTRIENTS**

2

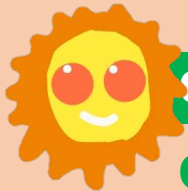
**ACCESS TO
ENOUGH
WATER**

3

**ACCESS TO
ENOUGH
SUNLIGHT
AND SHADE**



SUNLIGHT REQUIREMENT OF CROPS



6+ HRS OF DIRECT SUN

**Chilli pepper, eggplant,
tomato, ampalaya, upo,
watermelon**



4-6 HRS OF SUN

**Most herbs, lettuce,
cucumber, sitao,
carrots, radish,
garlic & ginger**

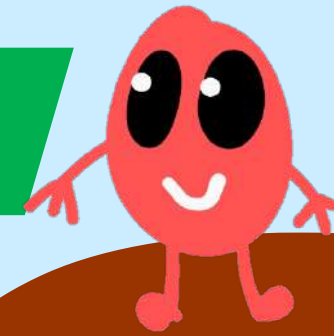


3-4 HRS OF SUN

**Mustard, spinach,
arugula, pakchoi,
garlic, chives, mint**



GROW YOUR SEED



CHARACTERISTICS OF A GOOD SOIL MIX

✓ LOOSE

✓ HAS WATER RETENTION CAPACITY

✓ HEALTHY SOIL



SAMPLE POTTING / SOIL MIXES



RICE HULL



GARDEN SOIL



COMPOST

OR



SEIVED SAND



GARDEN SOIL



COMPOST

REMINDER: Sieved soil, mix well & solarize (direct sun exposure)

SOW YOUR SEEDS



Open-pollinated



DIRECT SOWING

Leafy vegetables (lettuce, pechay, mustard, pakchoi, kangkong), okra



SEEDLING TRAY

Chilli, pepper, tomato, eggplant, cucumber, ampalaya





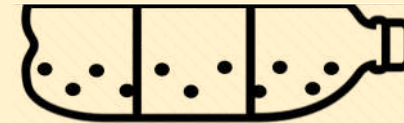
SELECT GOOD CONTAINER

REUSE RECYCLABLE CONTAINERS

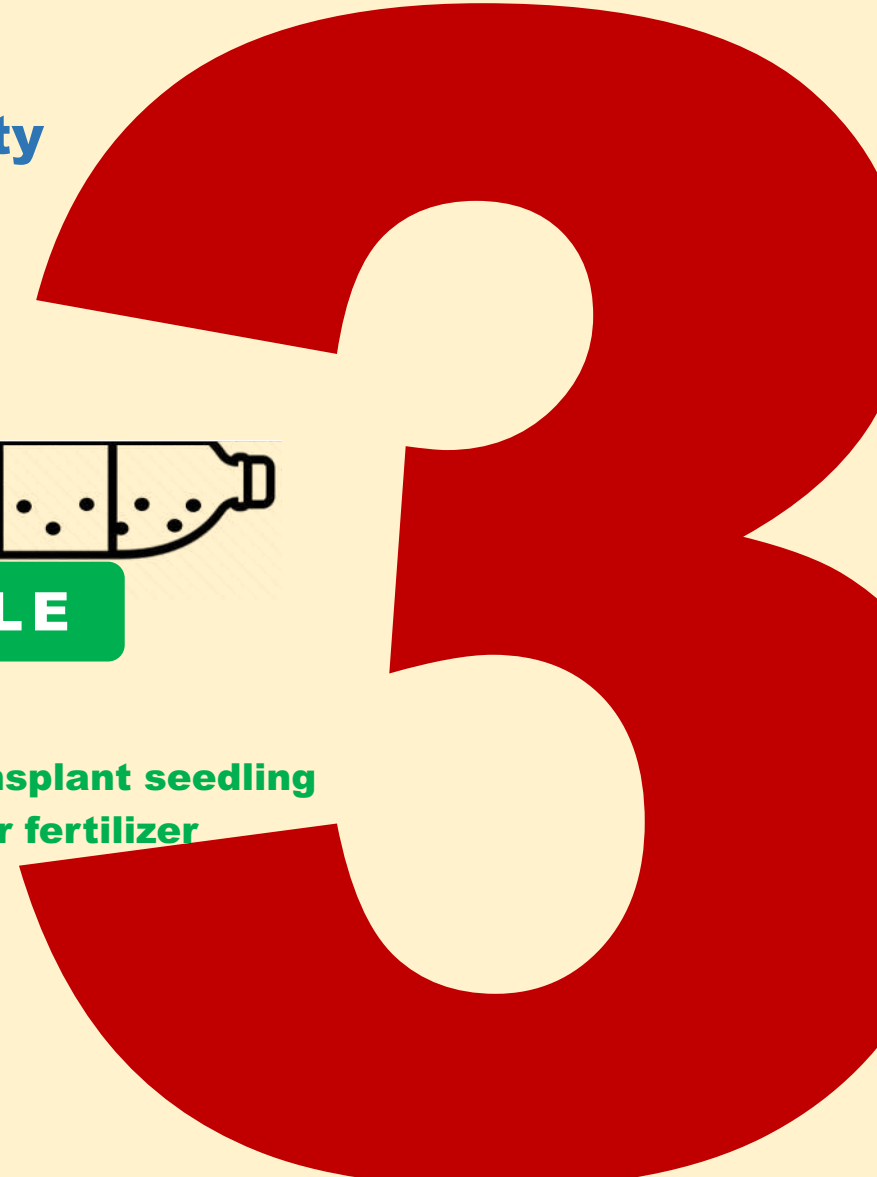
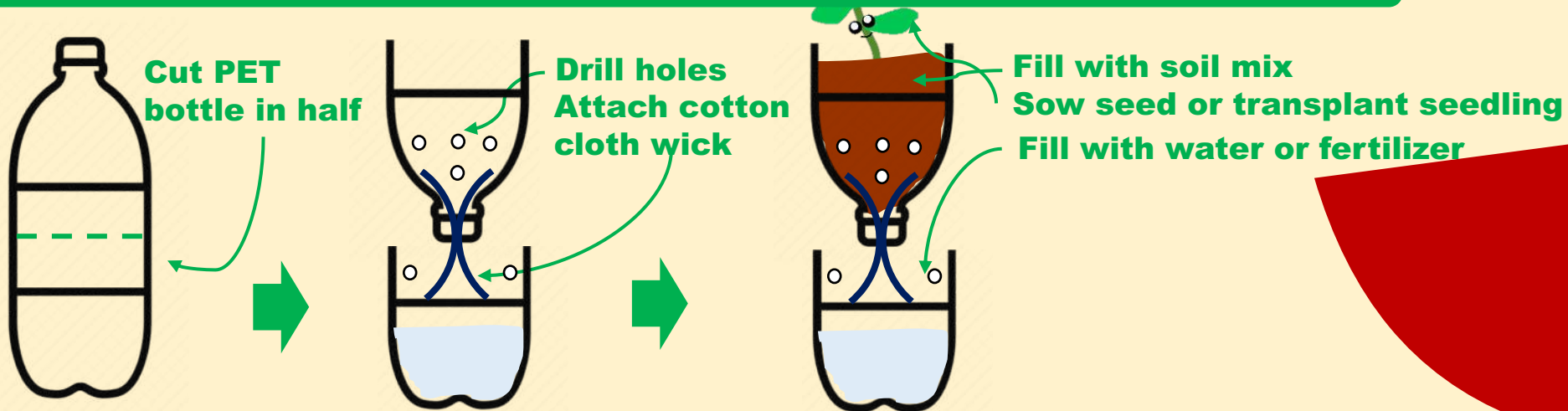
From **single-use plastic problem** to **urban food security solution**

CONTAINER CHARACTERISTICS

- ✓ Enough to support the size of the plant while it is growing.
- ✓ Enough drainage for water and root pruning.



MAKE YOUR OWN SELF-IRRIGATING BOTTLE







TRANSPLANT SEEDLINGS

WHEN TO TRANSPLANT



21-28 days after sowing (DAS)

**tomato, eggplant, chilli
pepper**

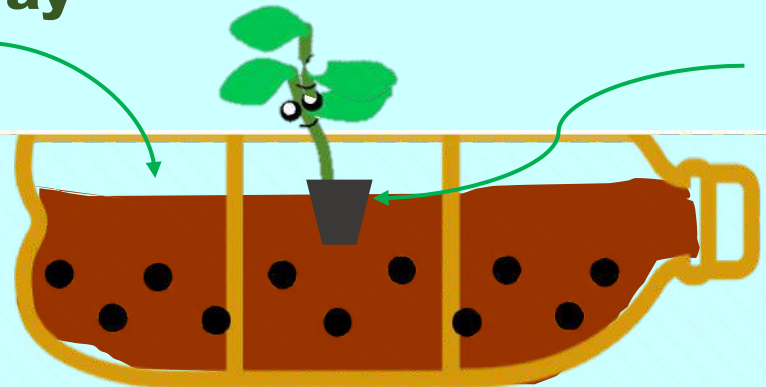
7-14 days after sowing (DAS)

**gourd (ampalaya, upo,
squash), cucumber**

Transplant seedling in the afternoon

HOW TO TRANSPLANT

- ✓ **Fill the container with soil mix**
- ✓ **Choose a good quality seedling from the seedling tray**
- ✓ **Make a hole for the seedling and slowly transplant it**
- ✓ **Sprinkle with water**





start with a crop that is easy to grow





grow *fast* *easy*

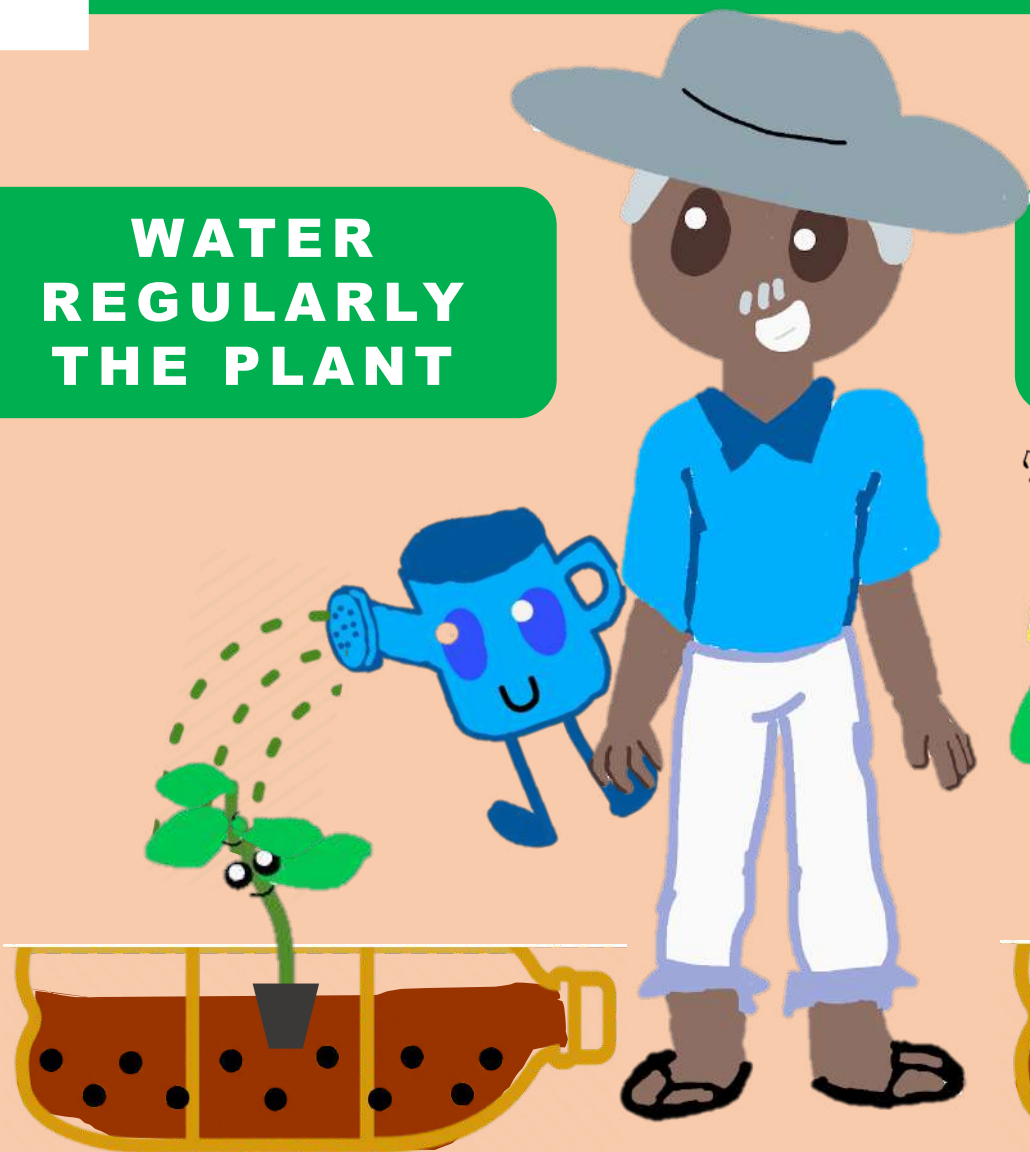
VEGGIES YOU CAN GROW IN 30-35 DAYS





WATER & FERTILIZE

**WATER
REGULARLY
THE PLANT**



**APPLY
ORGANIC
FERTILIZERS**



homemade organic fertilizer

FPJ



FFJ

WEED TEA

GM TEA

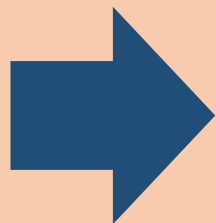


MAKE YOUR OWN organic fertilizer

GREEN MANURE TEA FROM LEGUMINOUS TREES



**30-50 KGS
GREEN LEAVES
(IPIL-IPIL OR MADRE
DE CACAO)**



1:1

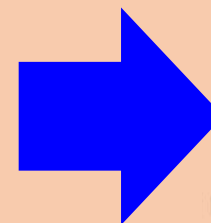


55 GAL. WATER

ROCK

FERMENT FOR 7 DAYS

**1 PART GM TEA
3 PARTS WATER**



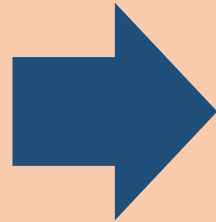


MAKE YOUR OWN organic fertilizer

WEED TEA FROM FRESH GRASS CLIPPINGS



30-50 KGS
FRESH GRASS
CLIPPINGS

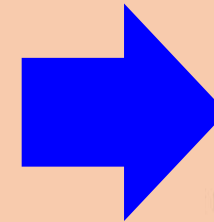


1:1



FERMENT FOR 7 DAYS

1 PART WEED TEA
3 PARTS WATER





MAKE YOUR OWN organic fertilizer

2:1

KILOS

**BANANA
TRUNK,
CAMOTE TOPS,
KANGKONG,
PECHAY O
ALUGBATI**

**MOLASSES O
BROWN SUGAR**

FERMENT FOR 7 DAYS

**FERMENTED
PLANT JUICE
FPJ**

**PAMPALAKI NG
TANIM**

**PAMPATIBAY NG
TANIM**





MAKE YOUR OWN organic fertilizer

FERMENTED FRUIT JUICE

FFJ



**PAMPABULAKLAK
NG TANIM**

**PAMPABUNGA NG
TANIM**

1 : 1

**RIPE FRUITS
LIKE BANANA,
MANGO O
AVOCADO**

**MOLASSES
OR BROWN
SUGAR**

FERMENT FOR 7 DAYS



HOW TO DO IT? FPJ & FFJ

**FERMENT IN A
COVERED
CONTAINER**



**IN ROOM
TEMPERATURE
FOR 7 DAYS**

**TO HARVEST:
STRAIN & STORE
IN A BOTTLE**



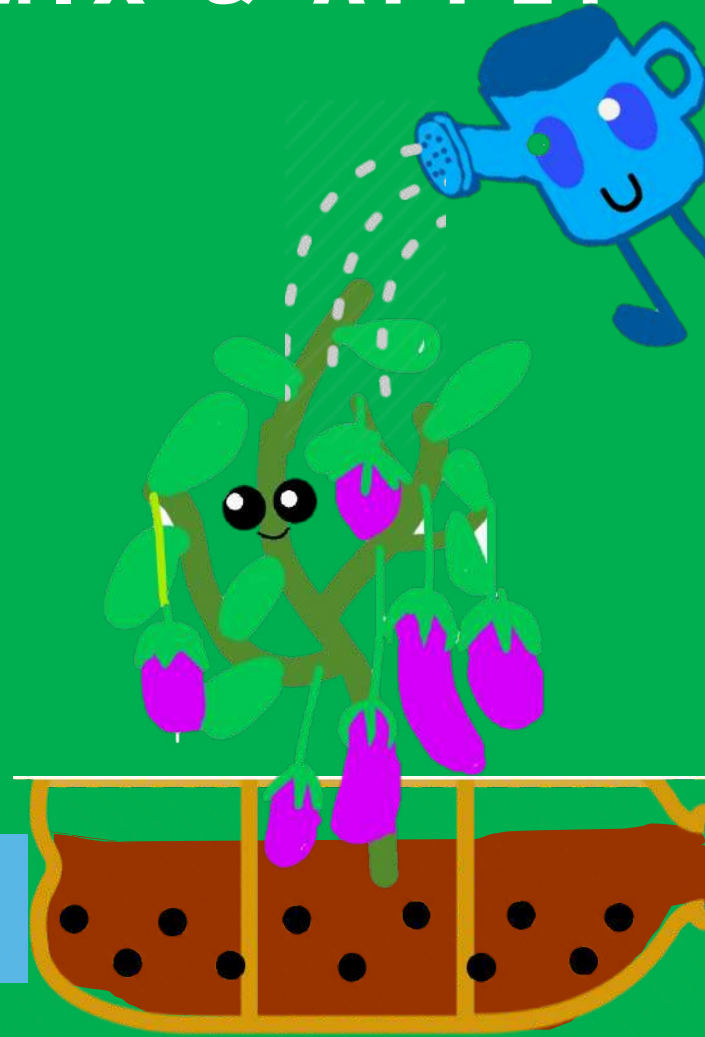
**STORE
PROPERLY**



MIX & APPLY



**2 TBS. / 1 LITER
WATER**





GROW NATURAL PEST CONTROL

PRACTICE COMPANION CROPPING

PLANT MARIGOLD, ZINIA, PETUNIA, BLUE TERNATE
AS NATURAL PEST REPELLANT AND POLLINATOR
ATTRACTANT





Marigold repels insect pests



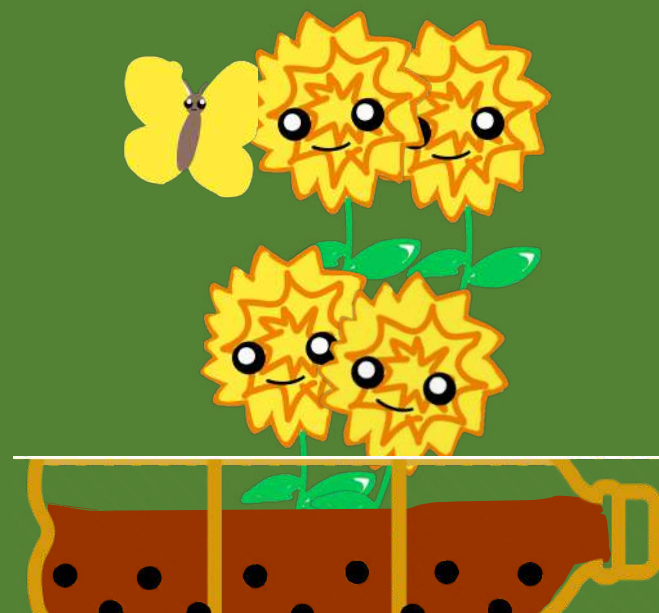
Petunia repels insect pests



Zinia attracts pollinators



Blue Ternate attracts pollinators





COMPANION PLANTING

SOURCE: IIRR. INTERNATIONAL INSTITUTE OF RURAL RECONSTRUCTION



**POTATO, CELERY,
ONION, GARLIC**



**CORN, SITAO,
EGGPLANT, RADISH**



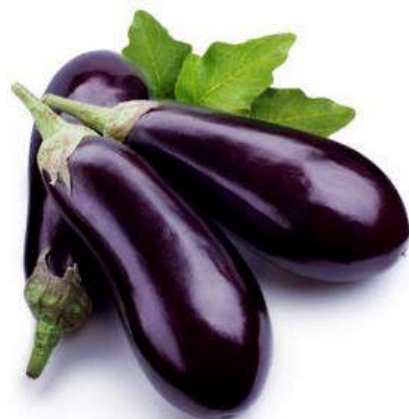
**CAMOTE, CABBAGE,
SQUASH, PECHAY**



**UPO, AMPALAYA,
CUCUMBER**



**RADISH, CARROTS,
CUCUMBER**



**BEANS, LETTUCE,
SQUASH, PEPPERS**



**ONION, LETTUCE,
SQUASH, PECHAY**



**CORN, PEAS,
CUCUMBER, POTATO**



**Please support the lives of
those who support ours.**

GCash
SCAN TO DONATE

WWF Philippines A

A large black and white QR code is centered within a white rounded rectangle, which is itself set against a blue background. The QR code is intended for scanning to make a donation to WWF Philippines A via GCash.

**Together, we can help our fellow
Filipinos rise above this crisis.**